

SALES TRENDS

In January 2011, CMLS changed its reporting structure to report data from the first day of the month to the last day of the month. Prior to this, data was reported from the fifth of the month to the sixth of the next month. CMLS has done everything possible to ensure the accuracy of its statistics; however, we may discover very slight anomalies that will require adjustments and corrections over time.

List to close

Of reported home sales that closed from May 1, 2011 through May 1, 2011, the average list to close was 150 days, a 8.2 percent increase over the same period a year ago.

Average listing price

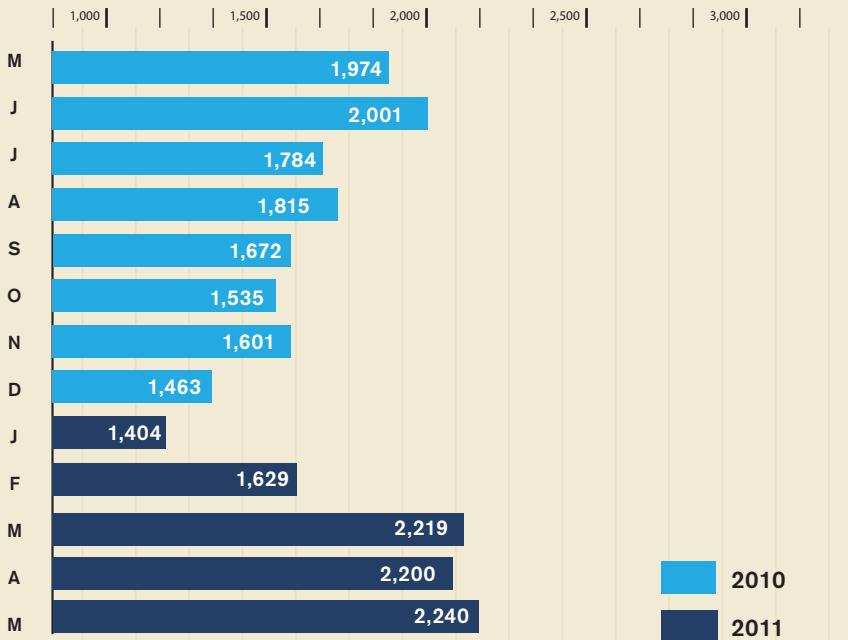
Listing Prices (May 1, 2011 through May 31, 2011) The average listing price of solds was \$257,971, a 2.2 percent increase over the same period a year ago.

New listings

New listings (May 1, 2011 through May 31, 2011) The number of new listings was 4,139, a 11.7 percent decrease over the same period a year ago.

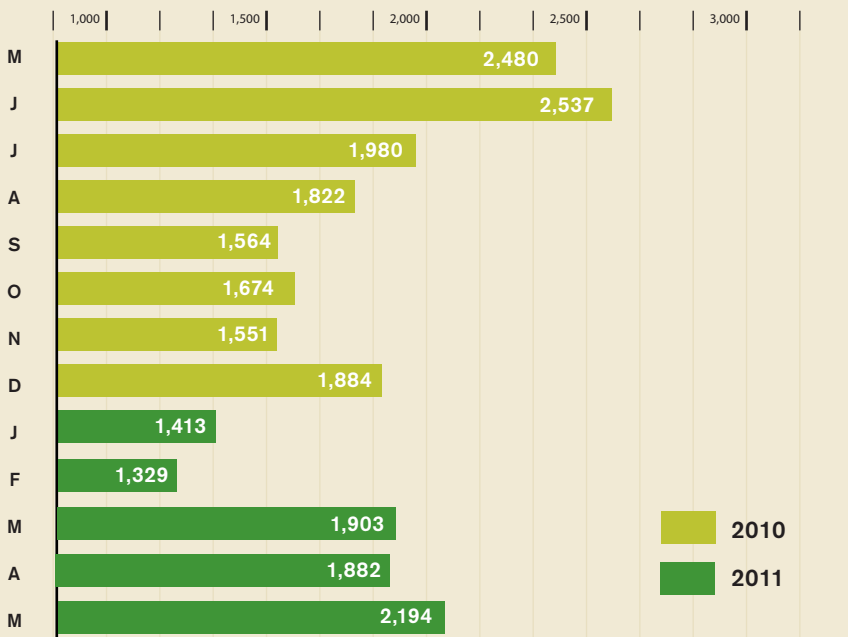
[VIEW MORE REPORTS HERE.](#)

Residential contracts reported



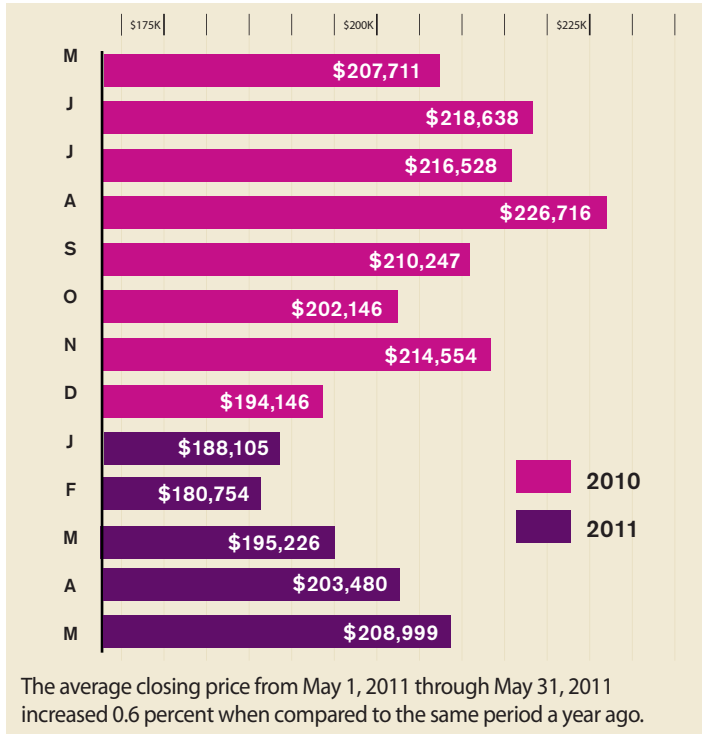
Contracts reported from May 1, 2011 through May 31, 2011 increased 13.5 percent over the same period a year ago.

Residential closings reported

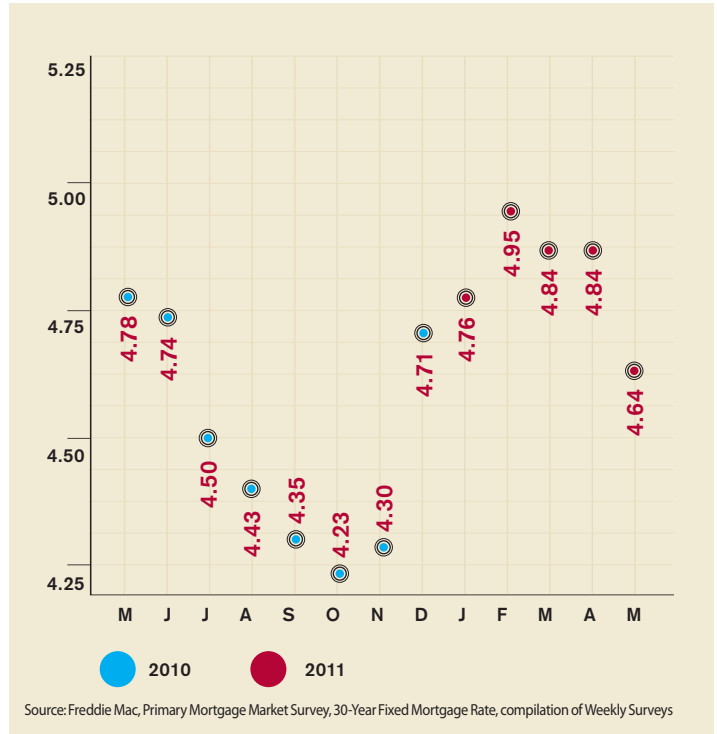


Closings reported from May 1, 2011 through May 31, 2011 decreased 11.5 percent when compared to the same period a year ago.

Average residential closing price



Mortgage rates



Data on these pages comes from Carolina Multiple Listing Services, Inc. The information may be subject to errors and should be verified by the user. Additional market activity data is available for members at www.Carolinarealtors.com. This information/data is for counties in the CMLS service area, but the CMLS information/Data also includes listings outside the service area, which are included in the compilations.

In April 2011, CMLS began using a new reporting tool to create reports. In order to report the most up-to-date figures each month, the tool is constantly "updating history", instead of freezing the data once it's reported. Therefore with each new month of reporting there could be slight variances in what was reported in the previous month as transactions are updated and adjustments made within the MLS system.