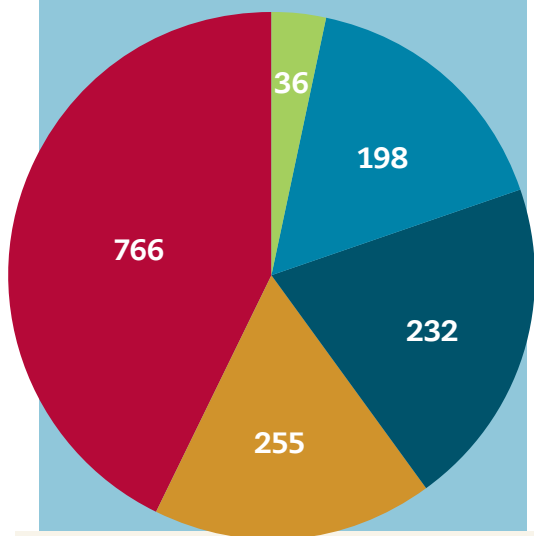


RESIDENTIAL SALES TRENDS

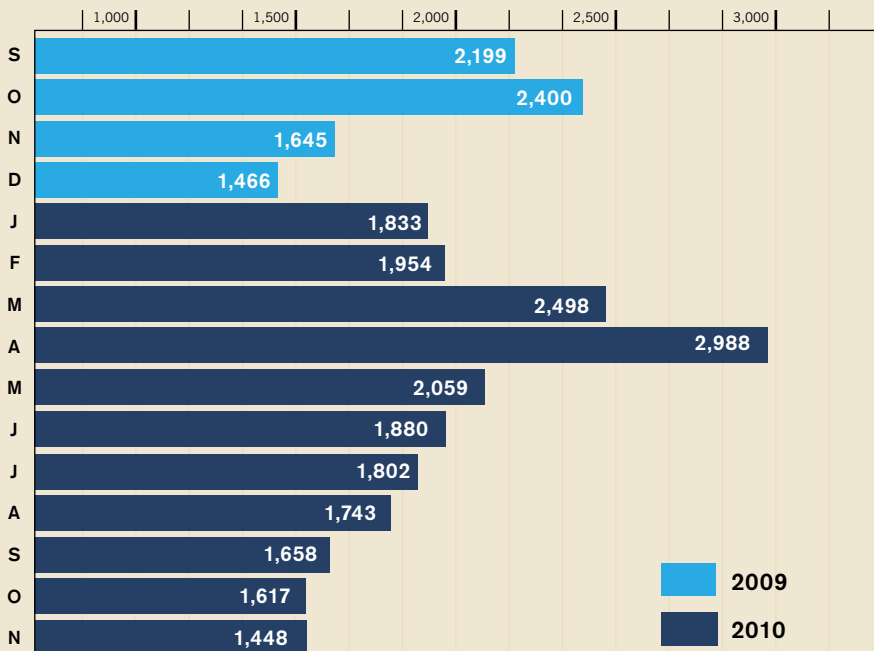
List to close

Of reported home sales that closed from Nov. 6, 2010 through Dec. 5, 2010, 51.5 percent closed in 121 days or more; 17.2 percent closed between 91 and 120 days; 15.6 percent closed between 61 and 90 days; and 15.7 percent closed in 60 days or fewer. Percentages are rounded to reflect 100 percent. Average list to close: 154.8



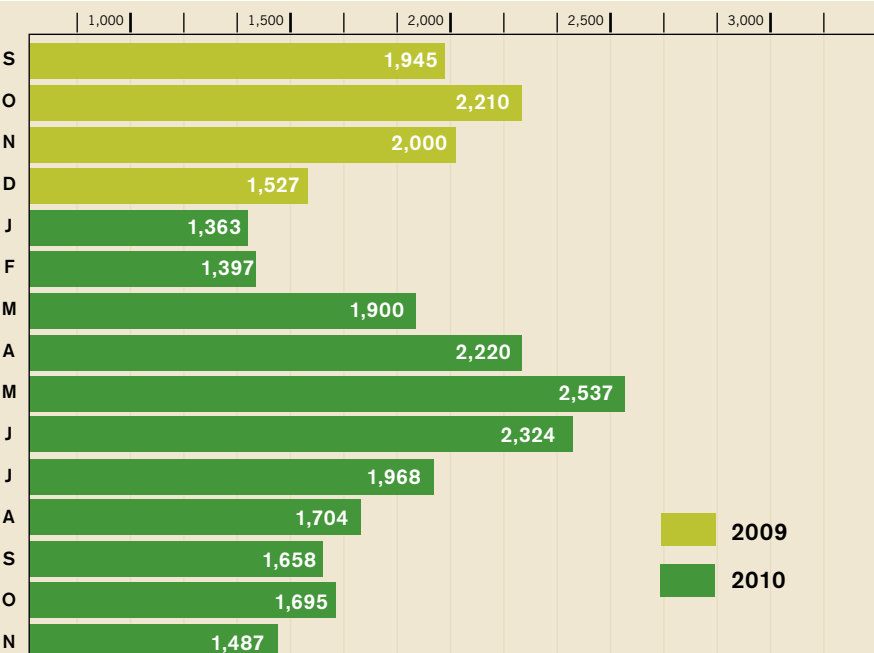
Listing and Sales Prices (Nov. 6, 2010 through Dec. 5, 2010) The average listing price of solds was \$247,369. The average sales price was \$215,239.

Residential contracts reported



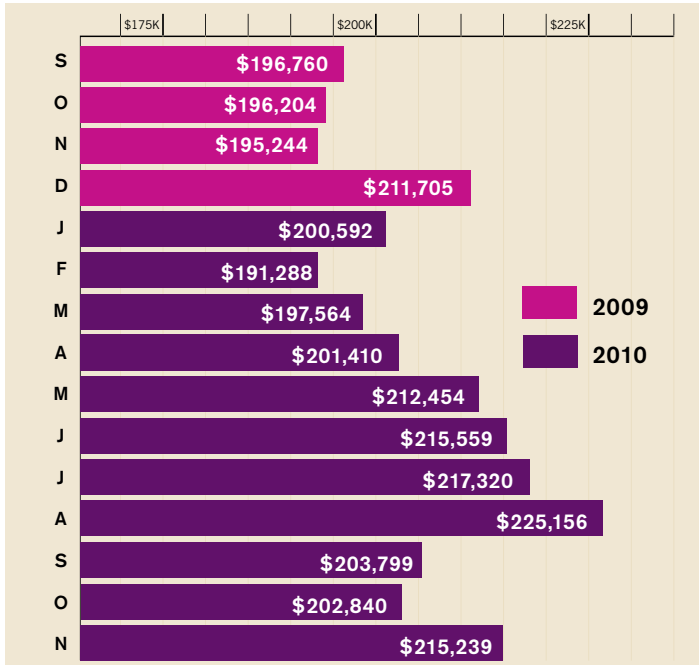
Contracts reported from Nov. 6, 2010 through Dec. 5, 2010 decreased 12 percent over the same period a year ago.

Residential closings reported



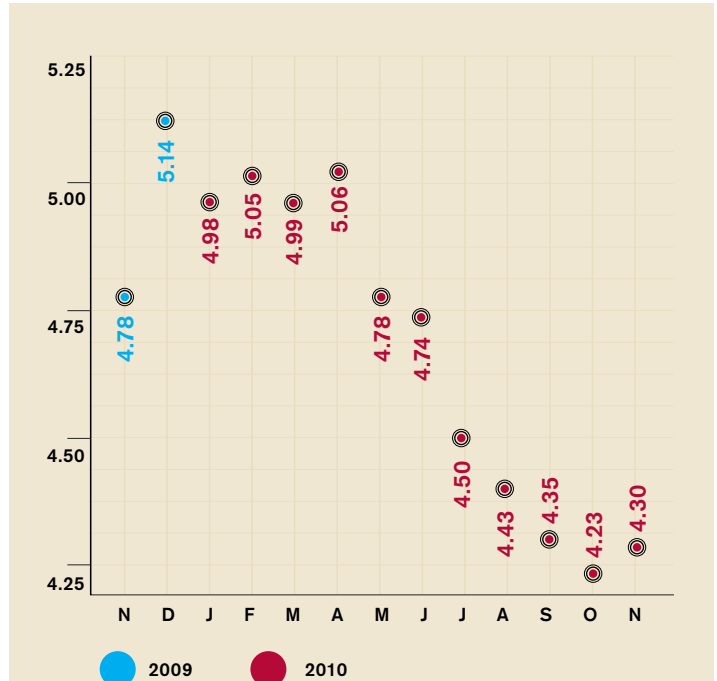
Closings reported from Nov. 6, 2010 through Dec. 5, 2010 decreased 25.7 percent when compared to the same period a year ago.

Average residential closing price



The average closing price from Nov. 6, 2010 through Dec. 5, 2010 increased 10.2 percent when compared to the same period a year ago.

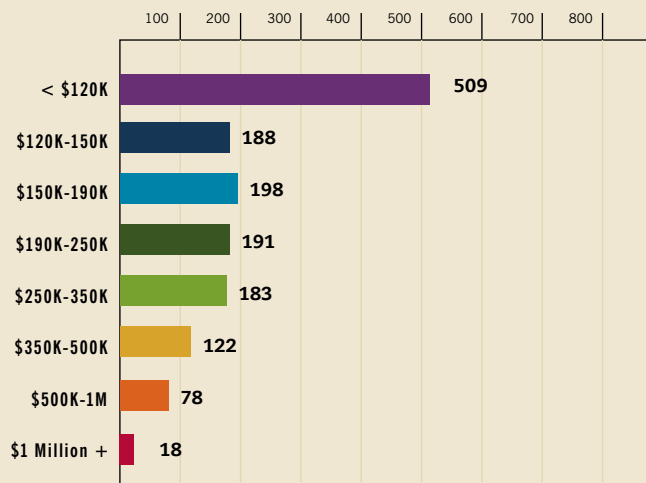
Mortgage rates



Source: Freddie Mac, Primary Mortgage Market Survey, 30-Year Fixed Mortgage Rate, compilation of Weekly Surveys

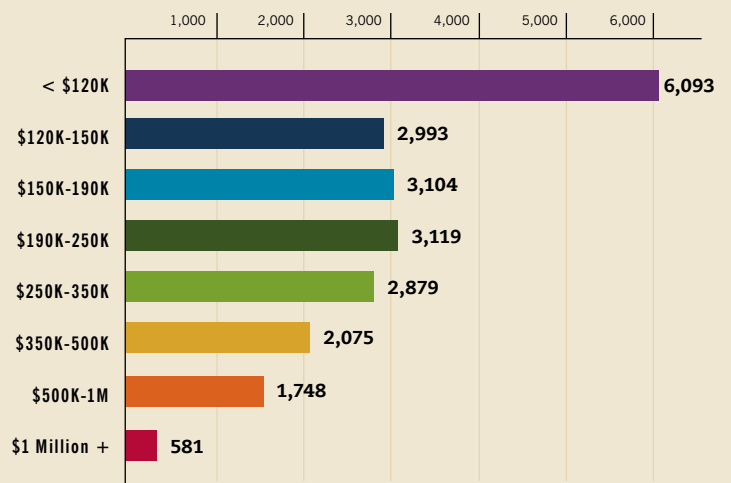
CMLS listings by price range

CLOSED



TOTAL CLOSED: 1,487

ON MARKET

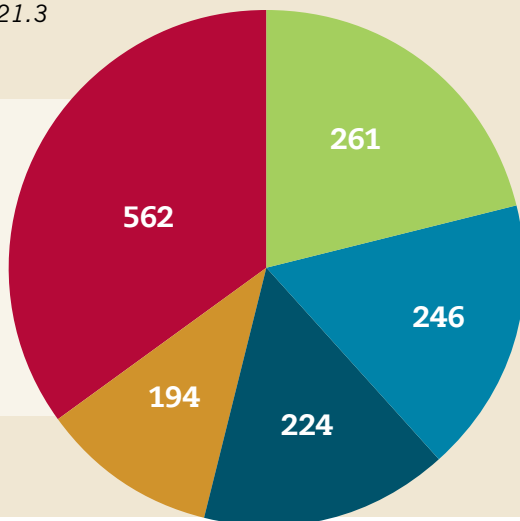


TOTAL ON MARKET: 22,592

Days on market

Of reported home sales that closed from Nov. 6, 2010 through Dec. 5, 2010, 38 percent came under contract in 121 days or more; 13 percent came under contract between 91 and 120 days; 15 percent came under contract between 61 and 90 days; and 34 percent came under contract in 60 days or fewer. *Percentages are rounded to reflect 100 percent.*
Average days on market: 121.3

- 0-30
- 31-60
- 61-90
- 91-120
- 121+



DATA ON THESE PAGES COMES FROM CAROLINA MULTIPLE LISTING SERVICES, INC. THE INFORMATION MAY BE SUBJECT TO ERRORS AND SHOULD BE VERIFIED BY THE USER. ADDITIONAL MARKET ACTIVITY DATA IS AVAILABLE FOR MEMBERS AT WWW.CAROLINAREALTORS.COM. THIS INFORMATION/DATA IS FOR COUNTIES IN THE CMLS SERVICE AREA, BUT THE CMLS INFORMATION/DATA ALSO INCLUDES LISTINGS OUTSIDE THE SERVICE AREA, WHICH ARE INCLUDED IN THE COMPILATIONS.



GREATER KNOWLEDGE >

For a full schedule of classes, visit www.MingleSchool.com.



Mingle School of Real Estate

The Official School Of The Charlotte Regional Realtor® Association

SPOTLIGHT

CMLS average sales prices by county

In the Carolina Multiple Listing Services, Inc. (CMLS) 10-county service area, the average sales price of a single-family/condo-townhome in third-quarter 2010 was \$208,116. Third-quarter 2010 prices increased 2.7 percent when compared to the same period a year ago. The following table shows prices for the 10-county service area and includes a look at pricing in both Lancaster and York counties, which are not a part of the 10-county service area.

Note: Data included in tables uses status-change dates of the 6th through the 5th. York and Lancaster counties, S.C., are not a part of the official CMLS service area.

Area	2009	3Q2009	4Q2009	1Q2010	2Q2010	3Q2010	3Q2010 %change from 3Q2009
CMLS	\$197,914	\$202,668	\$195,416	\$191,759	\$204,945	\$208,116	2.7%
Alexander	\$136,333	\$125,983	\$121,817	\$124,878	\$131,721	\$123,852	-1.7%
Anson	\$78,577	\$68,609	\$83,919	\$93,365	\$79,429	\$75,029	9.4%
Cabarrus	\$178,355	\$178,057	\$169,777	\$182,822	\$175,944	\$167,976	-5.7%
Gaston	\$122,721	\$131,876	\$120,533	\$118,162	\$123,379	\$126,220	-4.3%
Iredell	\$224,720	\$215,536	\$233,157	\$210,459	\$246,505	\$236,132	9.6%
Lincoln	\$186,555	\$206,431	\$185,649	\$202,722	\$208,601	\$186,939	-9.4%
Mecklenburg	\$210,086	\$214,881	\$209,020	\$207,362	\$222,197	\$235,598	9.6%
Montgomery	\$140,137	\$98,626	\$178,411	\$112,123	\$100,389	\$181,250	83.8%
Stanly	\$125,344	\$108,624	\$149,127	\$127,575	\$128,400	\$127,980	17.8%
Union	\$254,705	\$259,522	\$240,866	\$236,360	\$255,375	\$247,286	-4.7%
City of Charlotte	\$197,730	\$203,747	\$198,197	\$198,054	\$208,278	\$222,433	9.2%
*York	\$203,537	\$209,222	\$190,724	\$204,354	\$200,549	\$210,666	0.7%
*Lancaster	\$222,041	\$212,116	\$211,627	\$208,345	\$223,974	\$235,387	11.0%